

Stream Assets Guide



Webcam Overlay

PNG asset. Place over your current webcam as an image source in OBS.

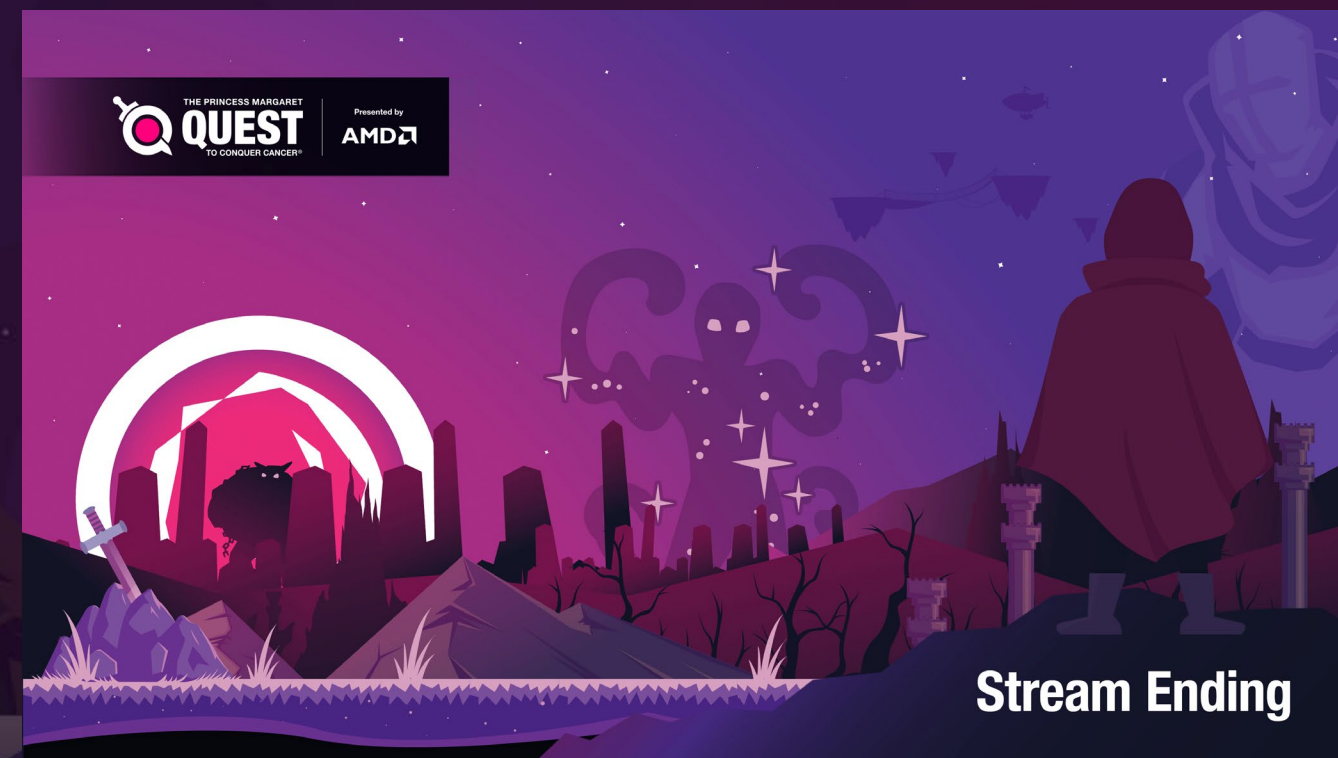
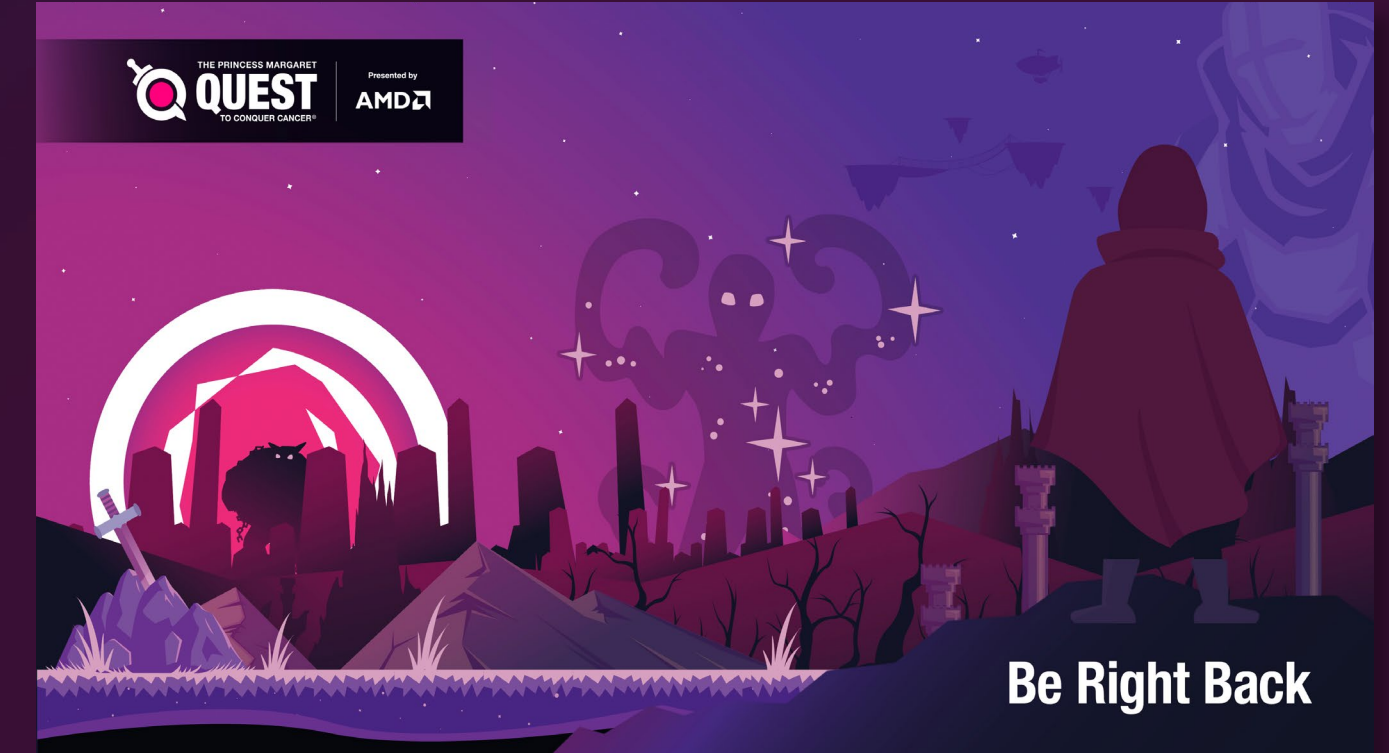
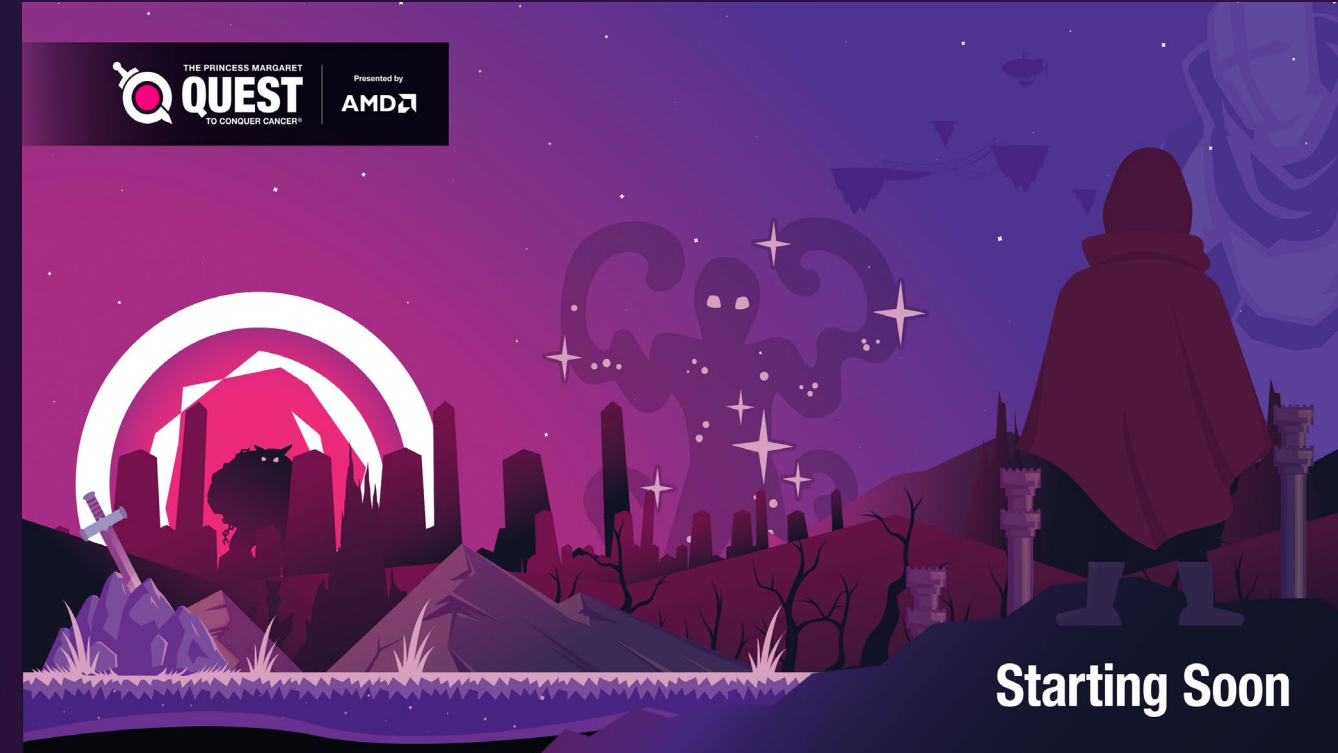


Static Stream Overlays

PNG file asset. Each file is a separate Scene for OBS. To use these assets:

- Create a new scene in OBS and name it according to the scene you are using.
- Create a new Source and select Media Source and name it according to the scene you are using.
- Upload the PNG file under “Local File.” Make sure you check mark ALL boxes on this page.
- Repeat for each scene.

For the “Just Chatting” scene, BE SURE to place the PNG image OVER your web cam. Scale your camera as needed.

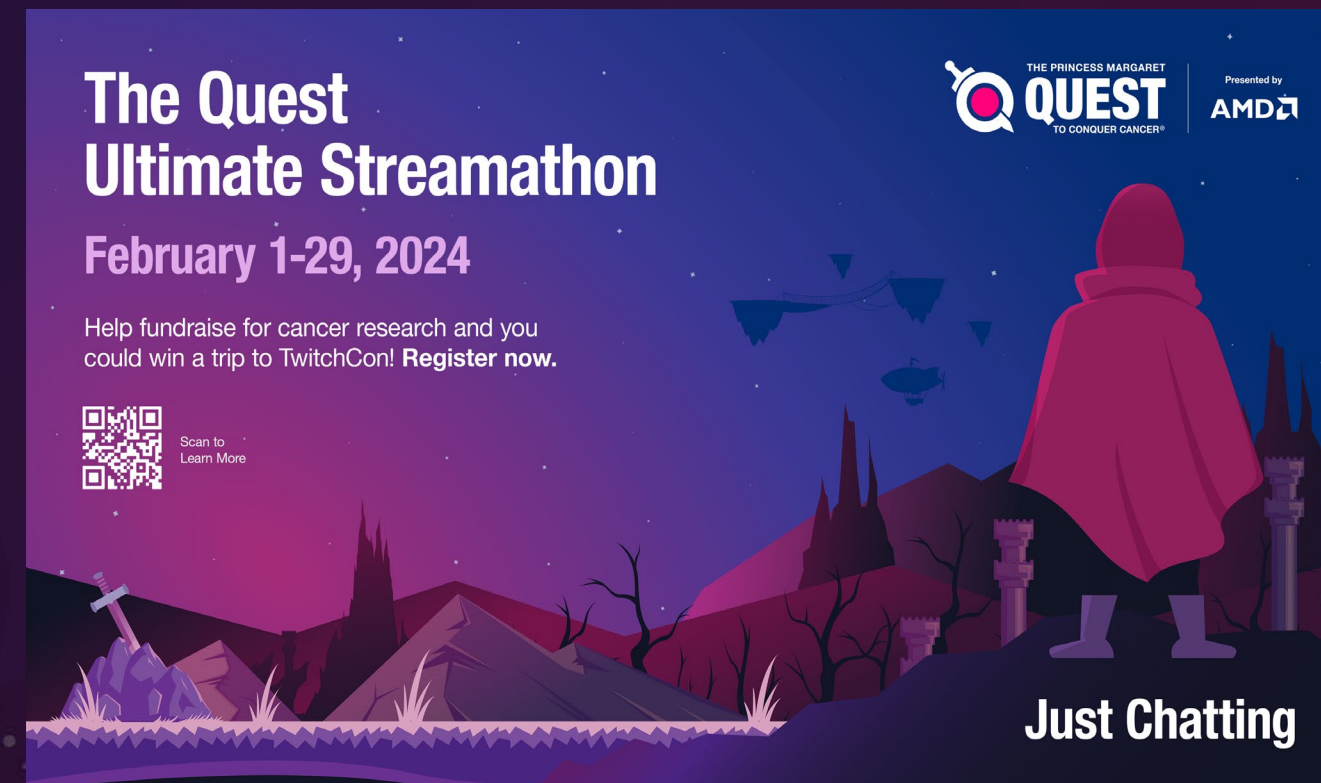


Just Chatting Milestone Overlays

PNG file asset. Each file is a separate Scene for OBS. To use these assets:

- Create a new scene in OBS and name it according to the scene you are using.
- Create a new Source and select Media Source and name it according to the scene you are using.
- Upload the PNG file under “Local File.” Make sure you check mark ALL boxes on this page.
- Repeat for each scene.

For the “Just Chatting” scene, BE SURE to place the PNG image OVER your web cam. Scale your camera as needed.



Donation Alert Streamlabs

Register and link your streaming account to the PMCF Quest to Conquer Cancer DonorDrive Page:

<https://questtoconquercancer.donordrive.com/index.cfm?fuseaction=donorDrive.event&eventID=505>

Please match your **StreamLabs DonorDrive Charity Alert Settings** to match these settings.

Alert sound up to Streamer
Alert Message {name} {amount}
Alert Duration: 6s
Alert Text Delay: 2s
Close Donator Message Setting: Disabled

Font: Helvetica Neue
Size: 58
Weight: 800
Text Color: #FFFFFF
Text Highlight Color: #ee2a7b

In OBS

Create a New Browser Source
Copy the URL from your streaming platform
Set the width to 1920x1080

Resize and place accordingly. Please use these as a base and feel free to tweak as needed.

The screenshot shows the Streamlabs settings panel for Charity Streaming Alerts. The 'Charity Streaming Alerts' toggle is set to 'Enabled'. Under 'Layout', three preview cards are shown: one with an image and text, one with just text, and one with an image and text. 'Alert Animation' is set to 'Fade In' and 'Fade Out'. The 'Message Template' field contains '(name) {amount}'. 'Text Animation' is set to 'None' with a 'SAMPLE TEXT' preview. The 'Image' field shows 'PMCF_Q2_Alert.webm'. The 'Sound' field has a 'Select Audio File' button. 'Sound Volume' is a slider at 50%. 'Alert Duration' is a slider at 6s. 'Alert Text Delay' is a slider at 2s. 'Enable Custom HTML/CSS' is set to 'Disabled'.

The screenshot shows two OBS settings panels. The top panel is 'Close Donator Message Settings', with 'Show Message' set to 'Disabled'. The bottom panel is 'Close Font Settings', with 'Font' set to 'Quattrocento Sans', 'Font Size' at 58px, 'Font Weight' at 800, 'Text Color' at #FFFFFF, and 'Text Highlight Color' at #ee2a7b.



Set Up Alerts StreamLabs x Twitch

1. Go to Settings
2. Integrations > Scroll down and find Charity Streaming (DonorDrive) > Link
3. Search For Charity Name > Princess Margaret Cancer Foundation
4. Enter your Participant ID (which is the last 4 digit of your fundraising page – *Image A*)
5. Once your DonorDrive Fundraising page has been linked, go to Alert Box in your Dashboard
6. Click Charity Streaming Donations > Set up your custom alerts and change Message and replace “Charity Name” to “Quest to Conquer Cancer” – *Image B*)
7. To test your donation alerts, click Launch (which will open a new window) and “Test Charity Streaming Donation”
8. Copy your URL to your OBS.
9. You’re all set!

Image A

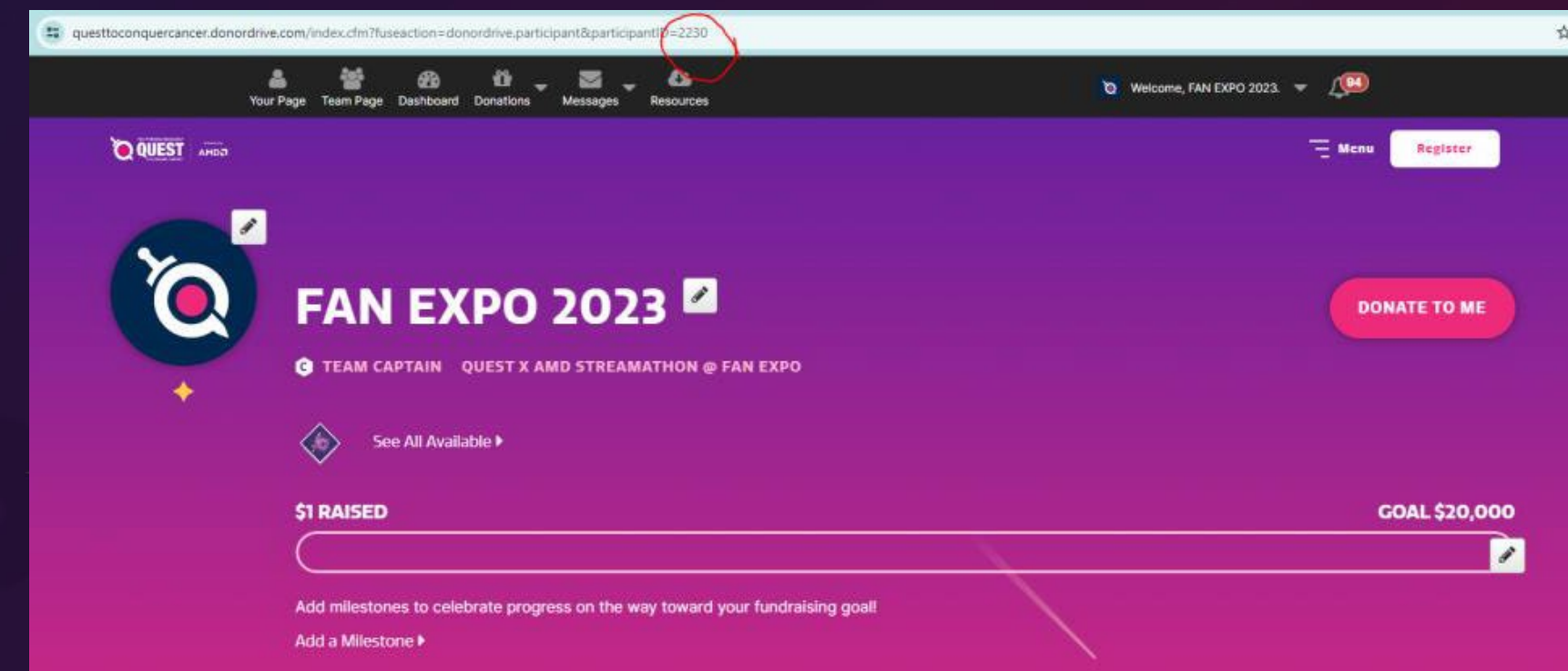
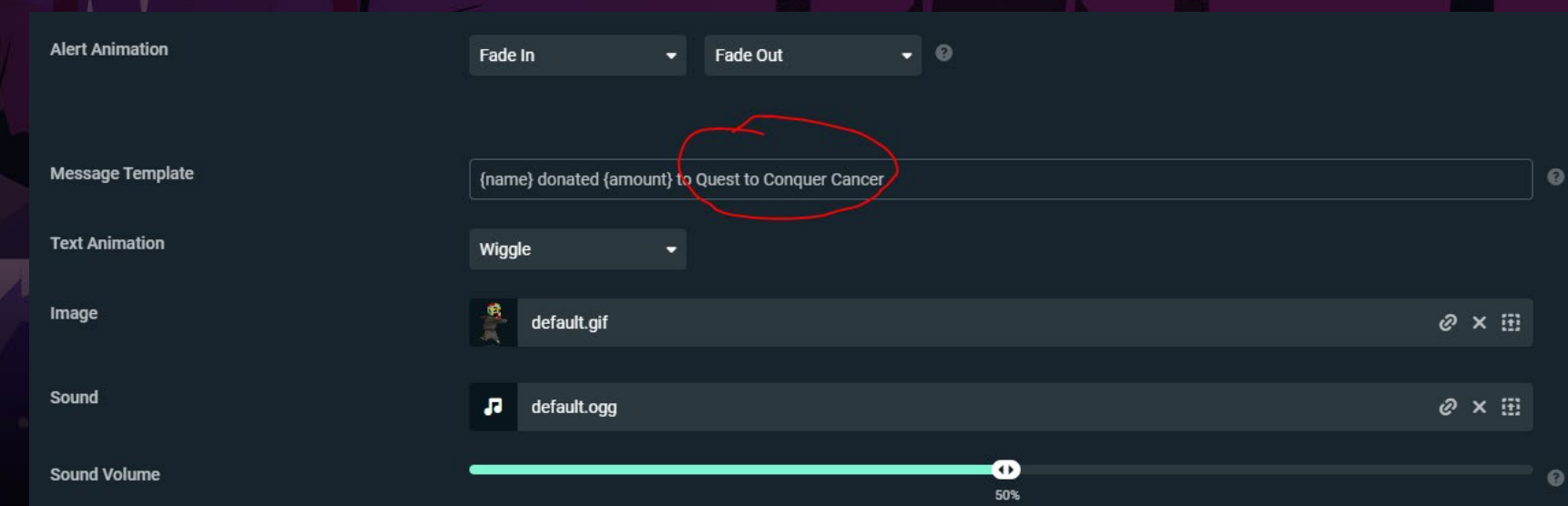
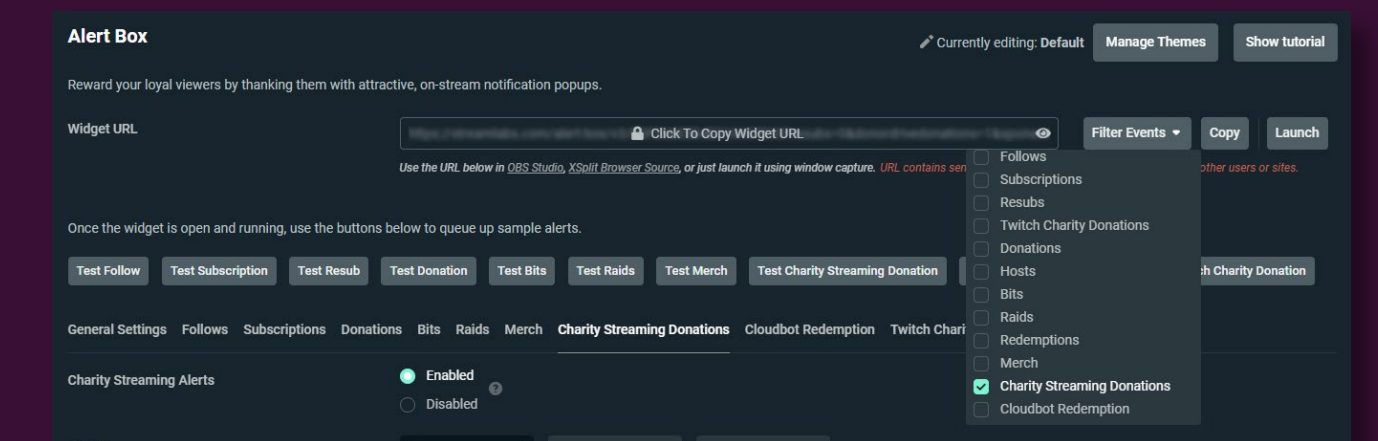


Image B



Streamelements as Primary Platform



If you are using Streamelements as your Primary Platform – please remember to tick off other alerts so it does not override your StreamElements alerts.

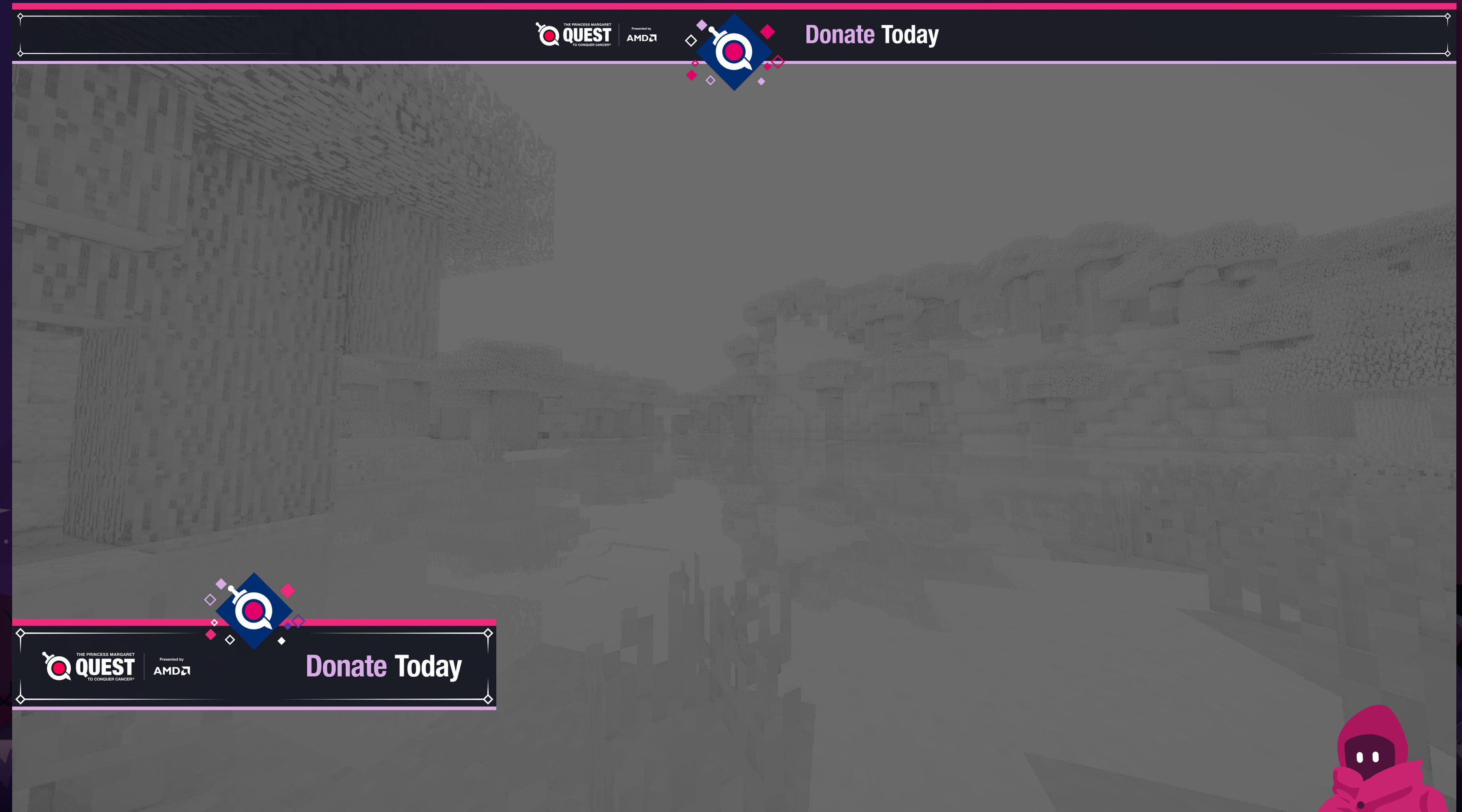


On Stream Banners

PNG file assets. Place as an image source in OBS.

- Banner can be placed wherever works for your stream.
- Banner should be placed either across the top or across the bottom of your stream.

Only use 1 of these banners on your stream.



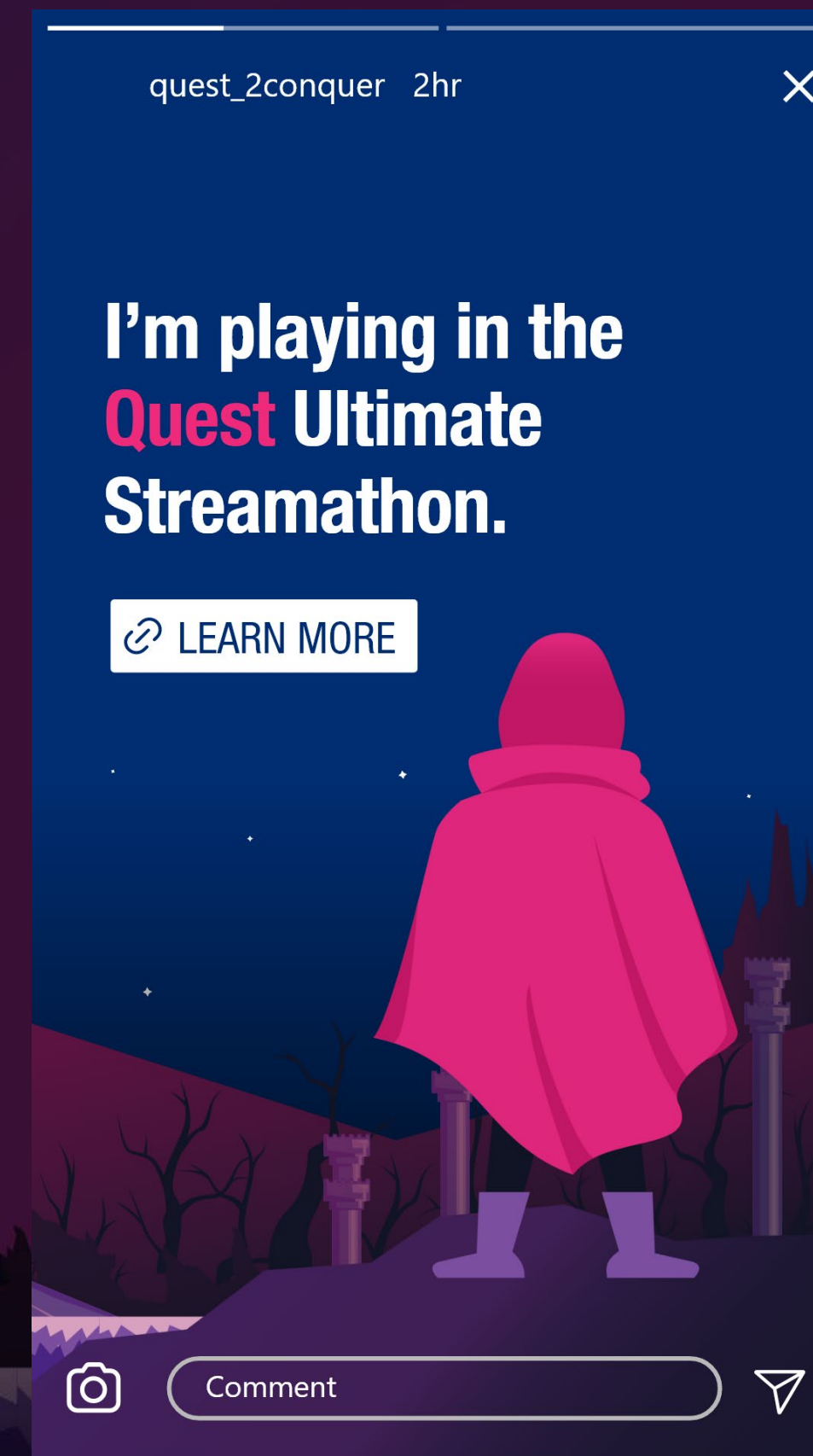
Social Media Registration Announcement

Sample Caption

I've joined the Quest Ultimate Streamathon! Every stream in February will support world-leading research at Princess Margaret Cancer Centre. Help me hit my goal here: linktolivestream/donationpage

Shorter for X:

I'm going live in the Ultimate Streamathon! Join me in the mission to Conquer Cancer: [link](#)



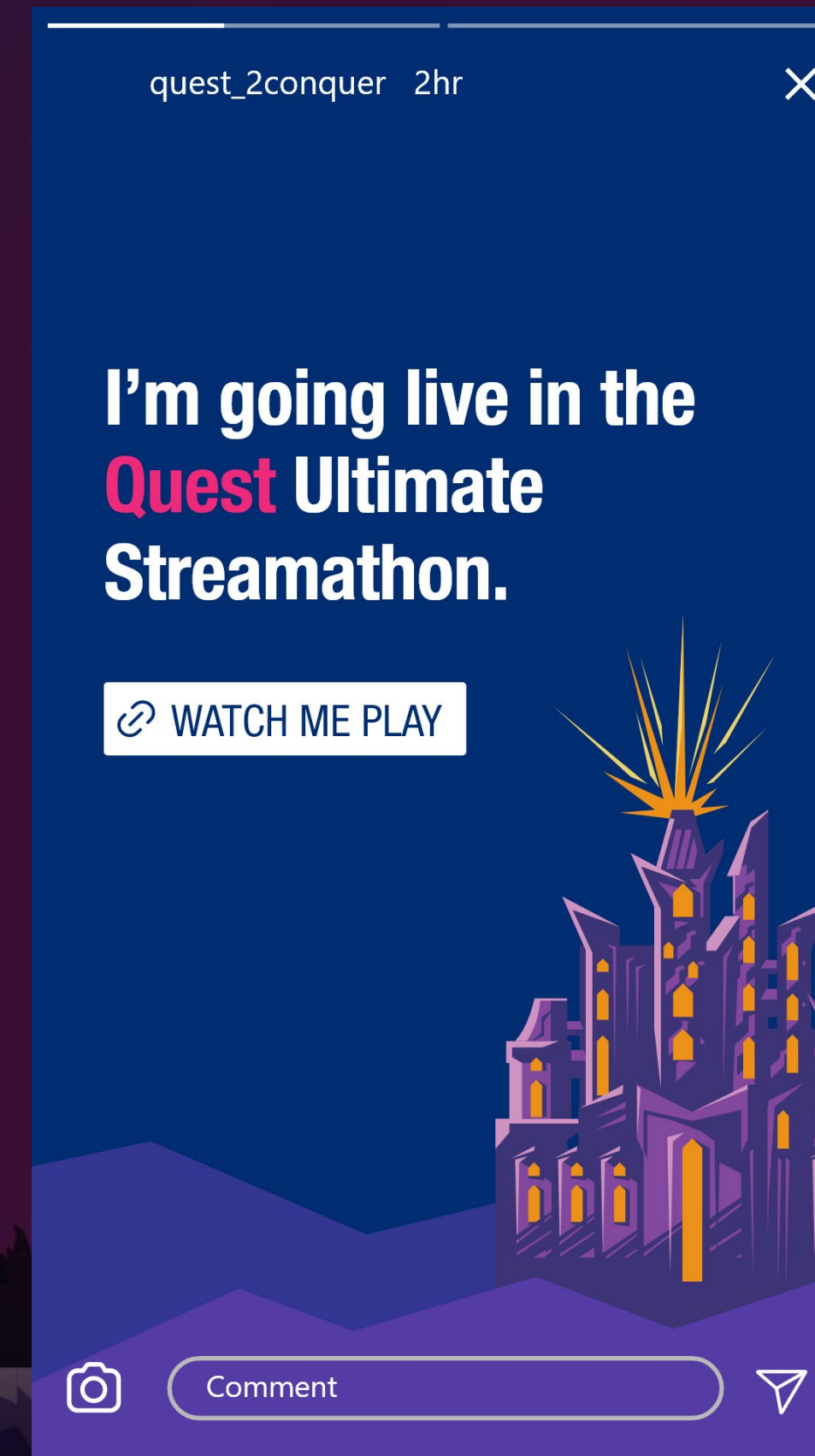
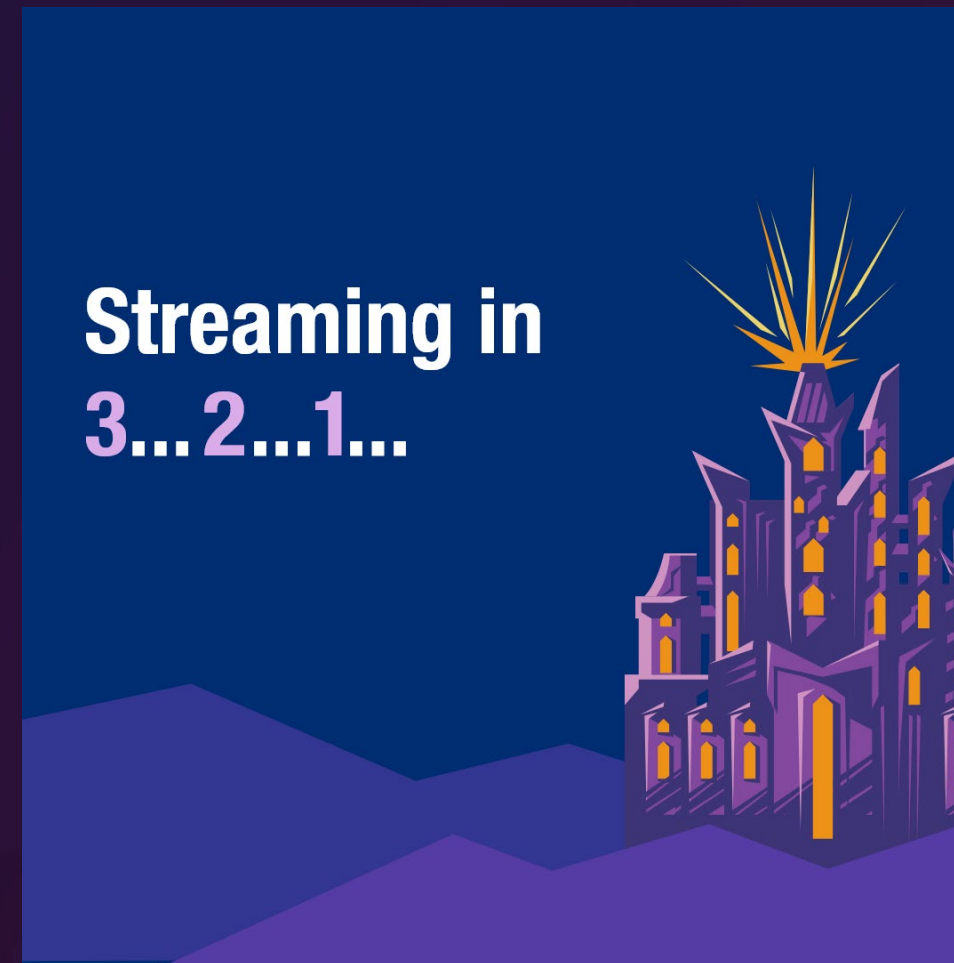
Social Media Live Stream LIVE Announcement Post

Sample Caption

I am about to go live in the Quest Ultimate Streamathon! Join me in the mission to Conquer Cancer. [linktolivestream](#)

Shorter for X:

Thanks for helping me raise funds for cancer research! Your support will help change lives around the world.



Social Media Live Stream LIVE Announcement Post

Sample Caption

Thank you for joining my stream and helping me raise funds for cancer research in the Quest Ultimate Streamathon. Your support will help change lives around the world!

If you'd still like to donate, you can join the mission to Conquer Cancer here: [linktodonate](#)

Shorter for X:

Thanks for helping me raise funds for cancer research! Your support will help change lives around the world.



Talking Points General

- Chat, I'm beyond hyped to be teaming up with Quest to Conquer Cancer and The Princess Margaret to support an important cause that's close to my heart.
- Season 4 of the Quest to Conquer Cancer's Charity Marathon is here! I'm ready to do good. Are you guys prepared to join me on this Quest? Spam (emote) in chat if you are! Let's go!
- Not only are we raising funds for life-saving cancer research, but we're also spreading hope to those who need it the most.
- Your donations will go directly to the brilliant minds at The Princess Margaret who are pushing the boundaries of cancer research and care.

- By supporting The Princess Margaret and the Quest, our community can change the world. Can we get a (emote) in the chat for that?
- I must give a special shout out - to all of you! Every bit of support you've shown during this stream has gone straight to The Princess Margaret, supporting the advancement of life-saving cancer and care.
- It's amazing that our stream, and gaming in general, can be a force for good!"
- Remember, this is not just any event - it's a chance to make a real difference! So, spread the word, and show the world the power of our Twitch community!

Talking Points

Scale

- 12,790 new patients each year
- 256,935 patient visits per year
- 76,000 radiation visits per year – the world's largest single-site radiation medicine program
- 3,272 people in our research and clinical care enterprise, including 1,193 Researchers and Research Staff

Research Performance

- 23% of patients participate in clinical trials, far above national averages for Canada, the U.S. and UK
- 304,600 ft² of dedicated research space – about the size of four soccer fields combined

At Princess Margaret Cancer Centre

- 12 Cancer Groups
- 26 Specialty Clinics
- 575 Nurses
- 449 Clinical Trainees
- 196 Oncologists
- 637 Health Professions Staff

Global Reach

- 500+ networking Research, clinical & educational institutions in 100+ countries
- 8 Institutional partnerships in Brazil, France, Germany, India, Israel, Jordan, Kenya and Switzerland

Breadth

- 200+ types of cancer treated, including many of Canada's most complex and rare cases
- Canada's most comprehensive surgical cancer program and one of the largest in the world

World-First Discoveries

- Discovery of stem cells
- Closing the T cell receptor
- Blood test for early detection of cancer and its location in the body
- Cancer cells that "hibernate" to survive anti-cancer drugs
- Treatment doubling survival rate for mesothelioma
- Successful radiation planning using artificial intelligence
- New psychological intervention for cancer patients

Supportive Care

- Internationally recognized program integrating palliative, psychosocial oncology, cancer rehabilitation and survivorship
- Canada's only cancer rehab program
- Home to Global Institute for Palliative, Psychosocial & End-of-life Care with partners in 20 countries

Key Phrasing

- One of the top 5 cancer research centres in the world
- Canada's largest and most comprehensive cancer Centre
- With a fierce commitment to patient care and research, our doctors and scientists have changed what the world knows about cancer
- Canada's largest first-in-human cancer trial program, where early-phase trials create a continuous research cycle from bench to bedside and back again
- Our research infrastructure and collaborative culture attracts the world's top minds to work at The Princess Margaret
- The Princess Margaret has the expertise, the experience, and the diverse patient populations to conquer cancer
- All our scientists and healthcare providers need are the resources to make it happen

THE PRINCESS MARGARET **QUEST** TO CONQUER CANCER®

Presented by **AMD**

Talking Point PDF



Talking Points

Fundraising Dollars at Work

- Did you know that The Princess Margaret revolutionized the world's understanding of cancer?
- Back in 1963, two amazing scientists, Till and McCulloch from Princess Margaret Cancer Centre, made a ground-breaking discovery – the stem cell! This little cell has the power to renew and repair tissues in our bodies, and their work laid the foundation for regenerative medicine worldwide. So inspiring!
- Did you also know that The Princess Margaret also pioneered immunotherapy, a less-toxic alternative to chemo?
- In 1983, Dr. Tak Mak pulled off something amazing – he cloned the T-Cell Receptor! This ground-breaking discovery paved the way for safer and more effective cancer treatments through immunotherapy.
- In 2018, The Princess Margaret developed a blood test with the potential to save the world! Dr. Daniel De Carvalho and Dr. Scott Bratman developed a simple blood test that can detect various types of cancer before symptoms even appear!
- Did you know that The Princess Margaret is home to one of the world's largest clinical trials programs? They test therapies to benefit cancer patients around the world.
- The Princess Margaret is using A.I. to make real progress! Dr. Tom Purdie and his colleagues were the first in the world to harness artificial intelligence to improve radiation cancer therapy treatment planning, improving accuracy and outcomes for patients.
- The Princess Margaret uses futuristic tech to see cancer in a new light! Dr. Gang Zheng developed unique nanotechnology to make tumours glow, giving patients the potential to receive information in real-time on how their cancer is responding to treatment.
- Did you know that the world sends their best to learn from The Princess Margaret? They are training the next generation of global cancer leaders. Partnering with 500 leading cancer institutes in 107 countries, they are one of the world's largest hubs of cancer knowledge and talent!
- The Princess Margaret literally finds what cannot be seen. In 2014, Dr. John Dick discovered that some patients are pre-disposed to leukemia and cardiovascular diseases, helping to identify patients at risk of cancer and heart disease before patients even show symptoms of these illnesses.



Thank You!

   @Quest2Conquer

